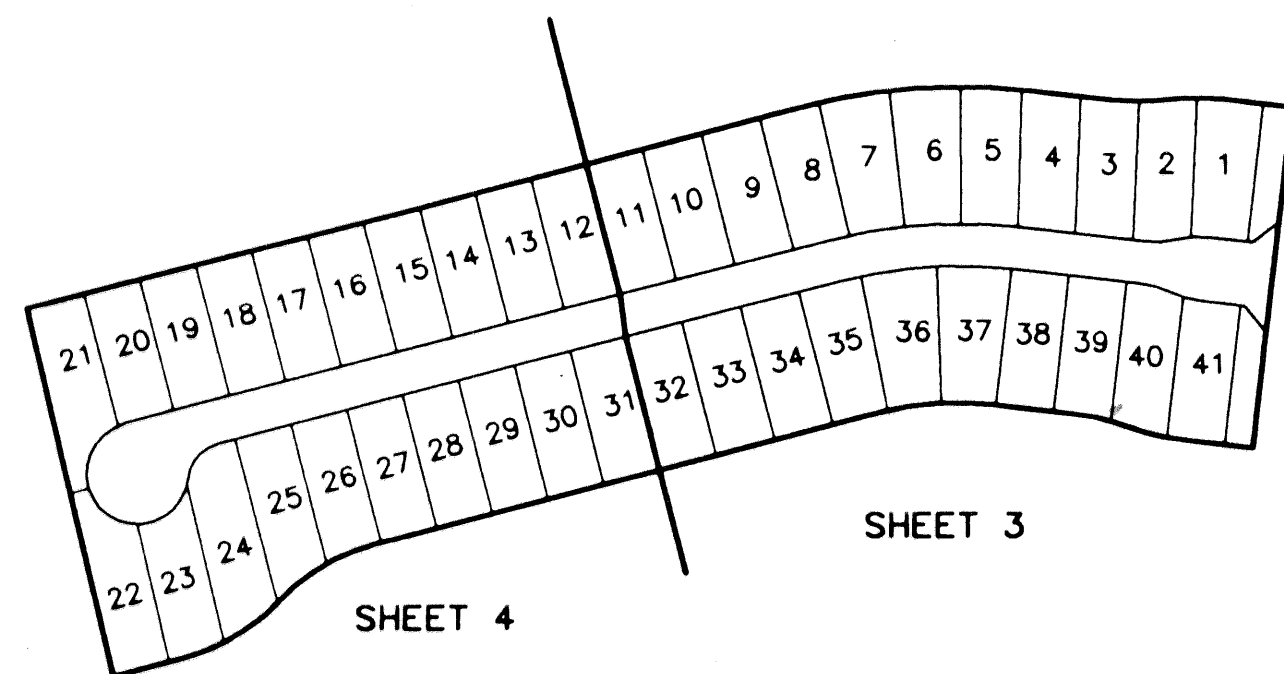
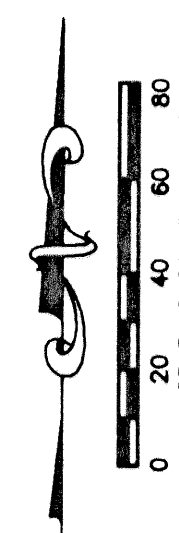


MIRASOL PARCEL SIX

PART OF GOLF DIGEST P.C.D.
SECTIONS 4 AND 5, TOWNSHIP 42 SOUTH, RANGE 42 EAST,
CITY OF PALM BEACH GARDENS,
PALM BEACH COUNTY, FLORIDA
SHEET 4 OF 4



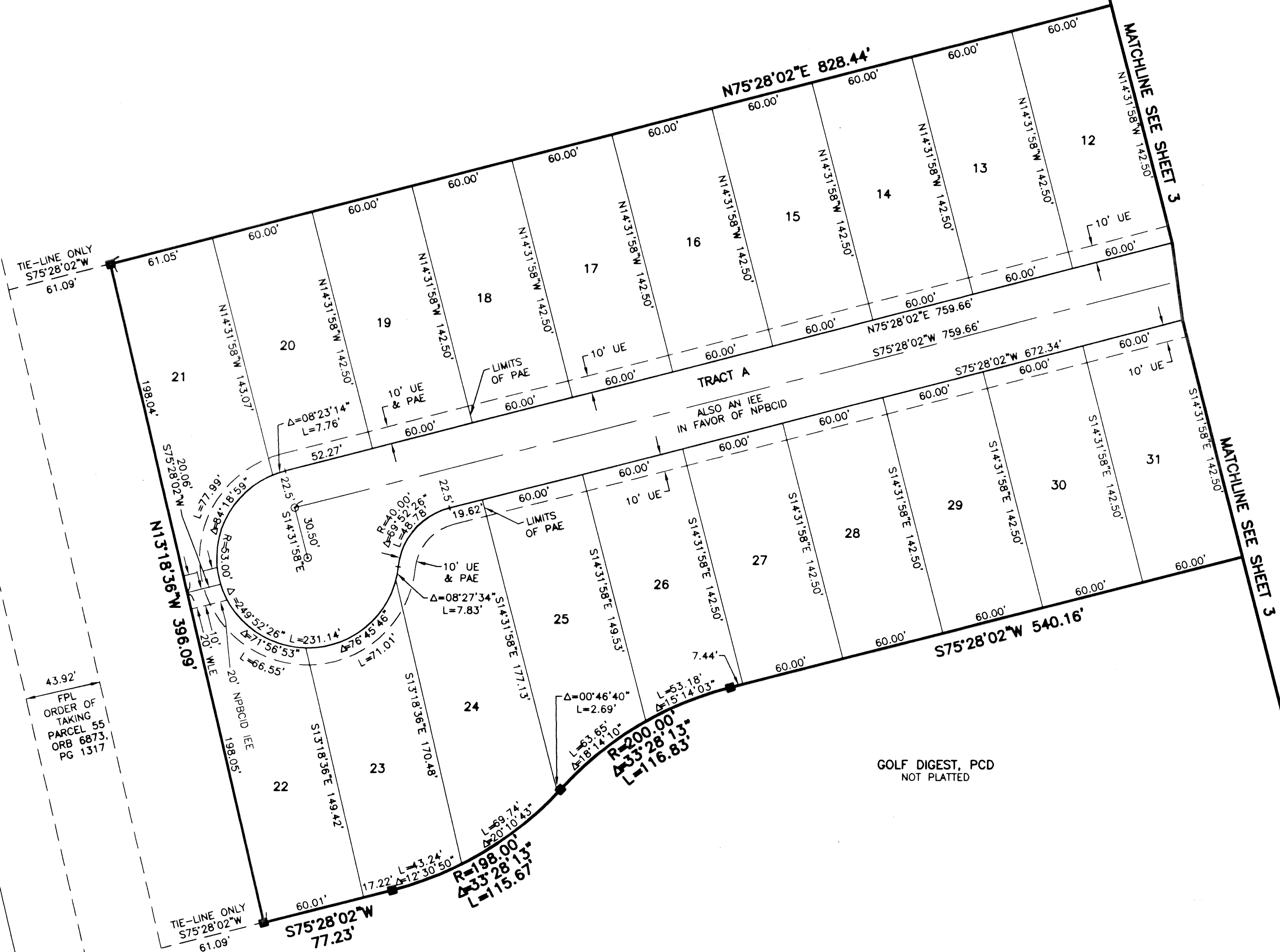
SHEET LOCATION MAP
NOT TO SCALE



STATE OF FLORIDA
COUNTY OF PALM BEACH
THIS PLAT WAS FILED FOR
RECORD _____ DAY OF _____
THIS _____ DAY OF _____
AD, 2002 AND DULY RECORDED
IN PLAT BOOK _____ ON PAGES
_____ AND _____
DOROTHY H. WILKEN, CLERK
BY: _____, D.C.

CIRCUIT COURT SEAL

GOLF DIGEST, PCD
NOT PLATTED



LEGEND

- Δ CENTRAL (DELTA) ANGLE
- CH CHORD
- DE DRAINAGE EASEMENT
- IEE INGRESS-EGRESS EASEMENT
- FPL FLORIDA POWER AND LIGHT
- L ARC LENGTH
- NPBCID NORTHERN PALM BEACH COUNTY IMPROVEMENT DISTRICT
- (NR) NON-RADIAL
- ORB OFFICIAL RECORD BOOK
- PAE PEDESTRIAN ACCESS EASEMENT
- PB PLAT BOOK
- PG(S) PAGE(S)
- PCD PLANNED COMMUNITY DEVELOPMENT
- R RADIUS
- UE UTILITY EASEMENT
- WLE WATER LINE EASEMENT
- PERMANENT REFERENCE MONUMENT FOUND LB 048 (4"x4" CONCRETE)
- PERMANENT REFERENCE MONUMENT SET LB 048 (4"x4" CONCRETE)
- PERMANENT CONTROL POINT SET LB 048
- ⊕ CENTERLINE

100' NPBCID DE
ORB 4247, PG 580

43.92'
FPL
ORDER OF
TAKING
PARCEL 55
ORB 6873,
PG 1317

GOLF DIGEST, PCD
NOT PLATTED

THIS INSTRUMENT WAS PREPARED BY MARY HANNA CLODFELTER, P.S.M. IN
THE OFFICES OF MOCK, ROOS & ASSOCIATES, INC., 5720 CORPORATE WAY,
WEST PALM BEACH, FLORIDA 33407.

SHEET 4 OF 4

S:\wp\l\p\p06\l\p\p06r\p02.dwg 05/26/02 10:34:02 AM EST

REV.: 02-05-02
CAD FILE:
TAYLPA06\PA06RP02

SCALE:
1"=40'
P.A. NO.:
99359.00
DATE:
SEPTEMBER, 2001
DRAWING NO.
42-42-04-97

FLORIDA L.B. NO. 48

MOCK • ROOS
ENGINEERS • SURVEYORS • PLANNERS

5720 Corporate Way, West Palm Beach, Florida 33407
(561) 683-3113, fax 478-7248

MIRASOL PARCEL SIX
PART OF GOLF DIGEST P.C.D.,
SITUATE IN SECTIONS 4 AND 5,
TOWNSHIP 42 SOUTH, RANGE 42 EAST,
CITY OF PALM BEACH GARDENS,
PALM BEACH COUNTY, FLORIDA